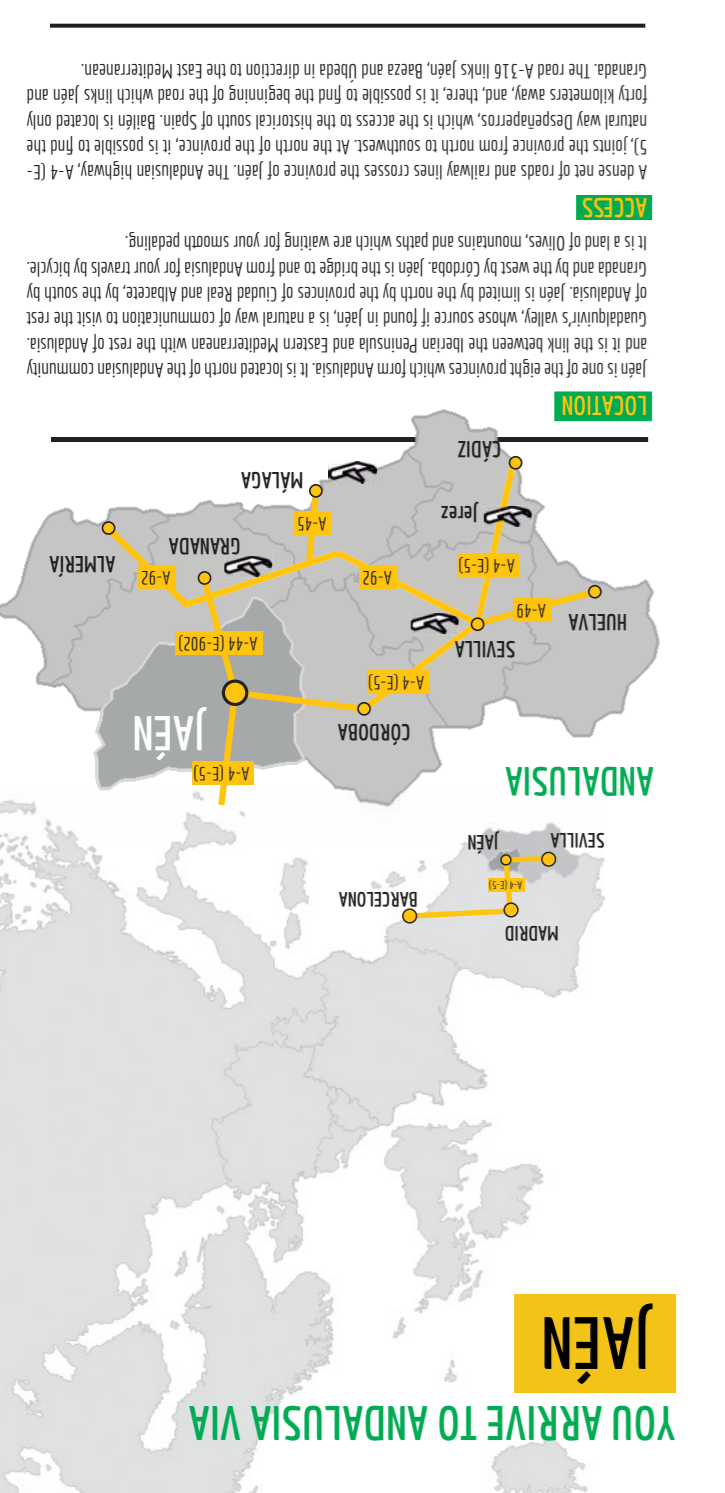
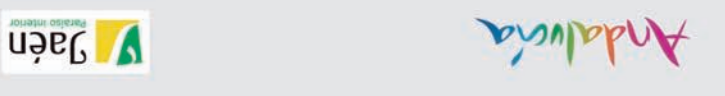
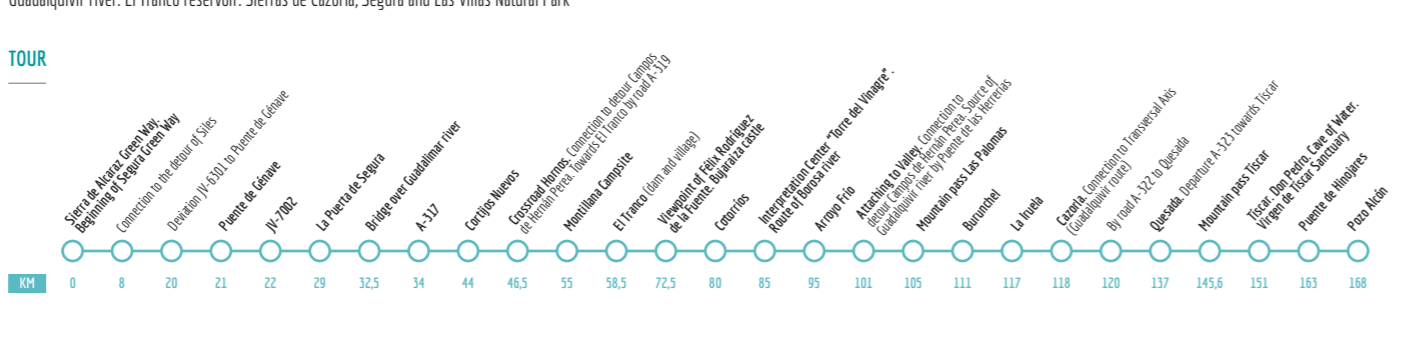


TRAVELLING BY BICYCLE THROUGH JAÉN AROUND ANDALUSIA



YOU ARRIVE TO ANDALUSIA VIA JAÉN

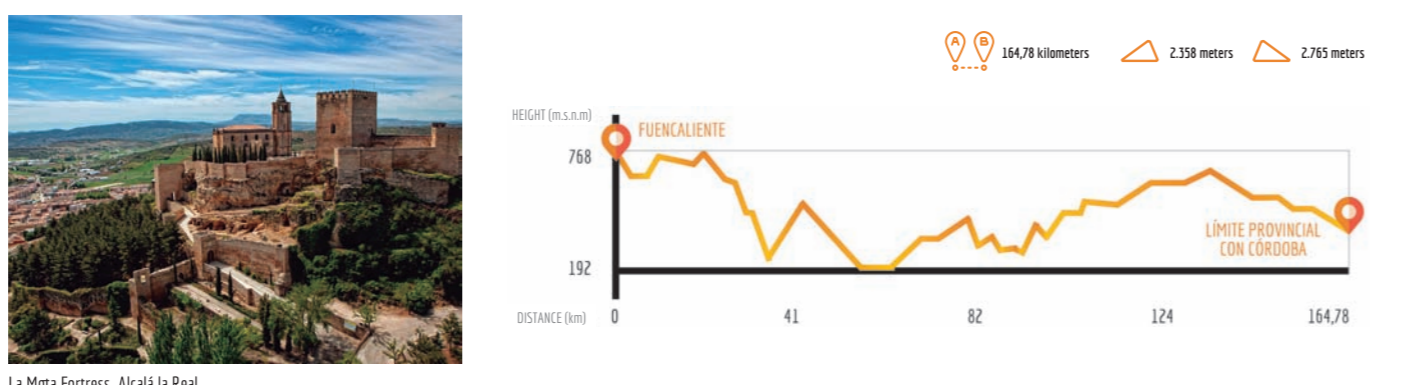
EAST AXIS. THE BIGGEST PROTECTED AREA OF SPAIN: SIERRAS DE CAZORLA, SEGURA AND LAS VILLAS NATURAL PARK



From Albacete, by Sierra de Alcaraz Green Way, and then by local roads until you get to Segura Green Way, the path arrives to Gérove. We arrive to Puente de Gérove by road JV-6301, where our journey by the green way finishes...

WEST AXIS. SIERRA MORENA AND CASTLES AND BATTLES ROUTE

From Fuencaiente (Ciudad Real) to Córdoba by Sierra de Andújar Natural Park and Aceite Green Way



From Fuencaiente and Sierra Madrona Natural Park (Ciudad Real) we go into the province of Jaén by the road CR-500, which is transformed into the A-617A. The route goes through Sierra de Andújar Natural Park, one of the best representations of the Mediterranean forest of Spain...

CONNECTIONS

THE COLONIZED SMALL VILLAGES OF EL CONDADO (18th CENTURY) AND THE SIERRA DEL ORO Connection between East Axis and Central Axis

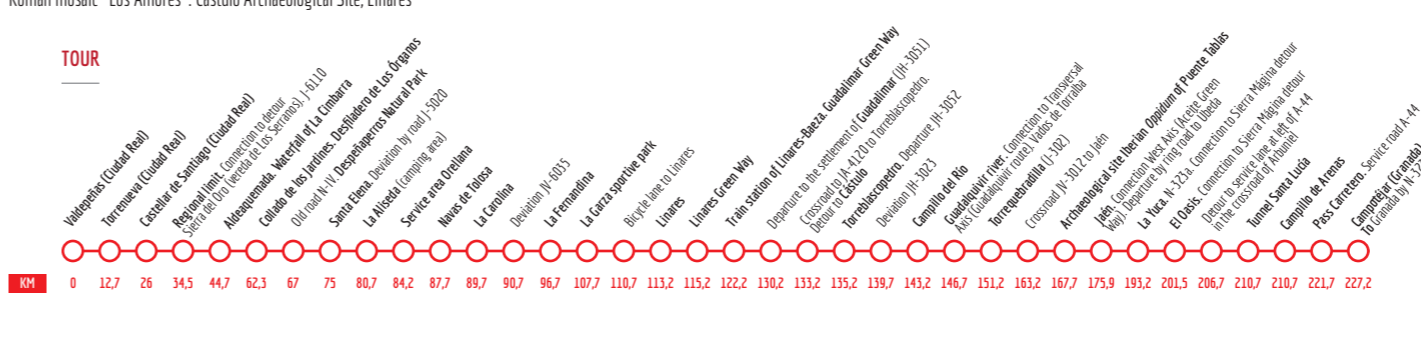
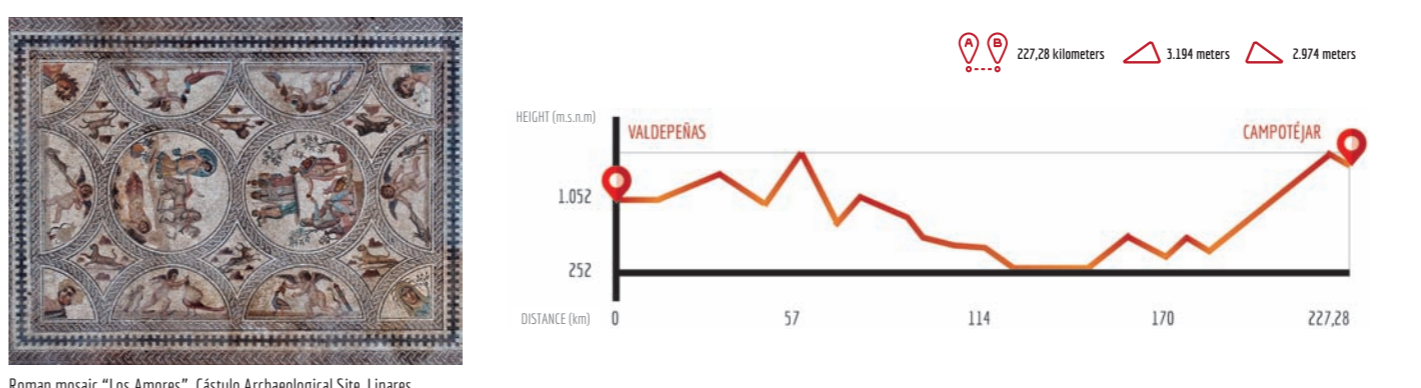
THE SIERRA MORENA MINING LANDSCAPE Connection between West Axis and Central Axis by Los Escoriales-Linares

THE SIERRA MÁGICA, ANDALUSIAN FRONTIER WITH GRANADA KINGDOM Connection between West Axis and Central Axis by Sierra Mágina

THE FORESTARY LANDSCAPE OF SIERRA DE SEGURA East Axis detour, from Gérove to Hornos de Segura

CENTRAL AXIS TO THE SOUTH

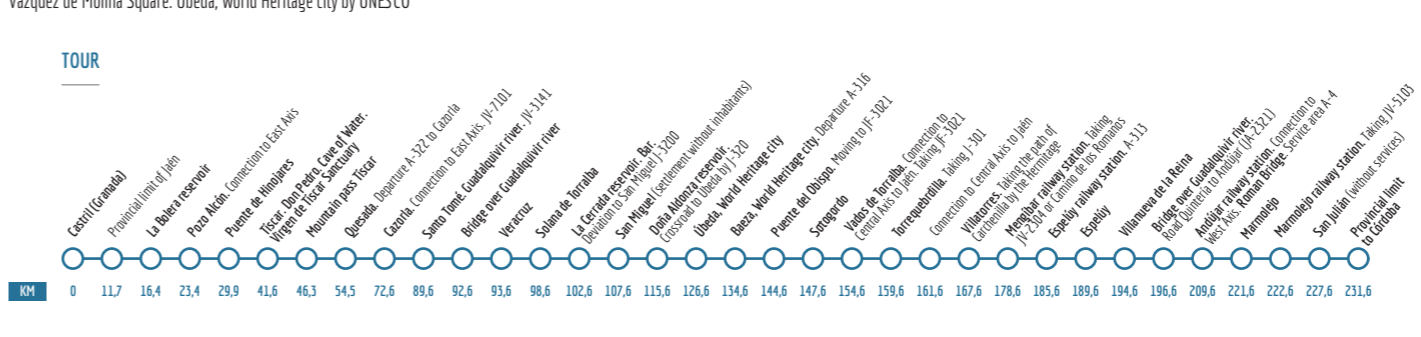
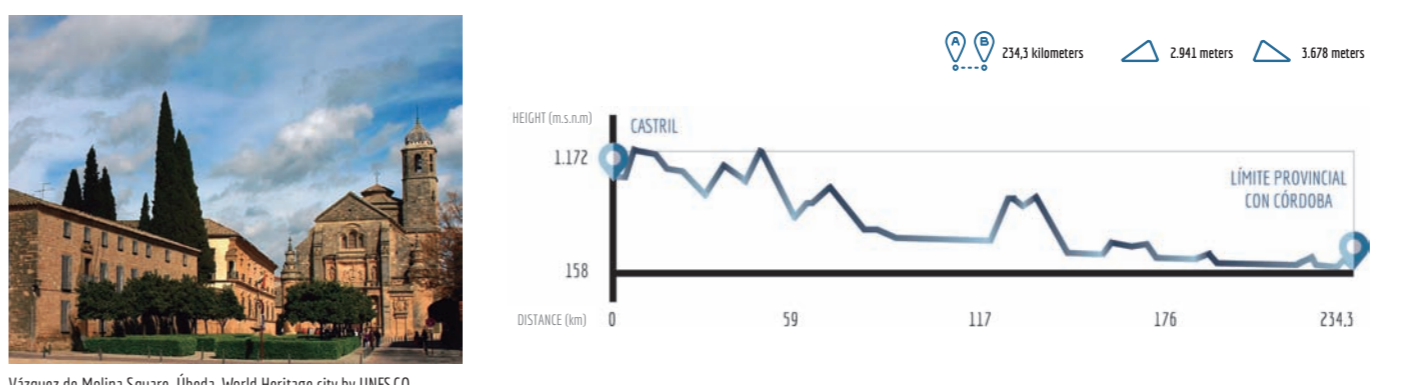
From La Mancha (Ciudad Real) to the province of Granada by Despeñaperros, Jaén, Guadalbujún Valley and Sierra Mágina Natural Park



From Valdepeñas, we will go through Torrenueva to arrive to Castellar de Santiago (three localities of the province of Ciudad Real). There, we take the road CR-610 that leads us to Andalusia. In this place, the road connects with the cross route of connection Sierra del Oro by a path that appears by the East Vereda real de los Serranos...

TRANSVERSAL AXIS: GUADALQUIVIR ROUTE. THE PROVINCE OF JAÉN FROM THE EAST TO THE WEST

From Castril (Granada) to Villa del Río (Córdoba) following the Guadalquivir riverbed



We enter in Jaén province from Castril (Granada) by the A-326, going through La Bolera reservoir or Pozo Alcón. We will take the road CR-610 that leads us to Andalusia. In this place, the road connects with the cross route of connection Sierra del Oro by a path that appears by the East Vereda real de los Serranos...

DETOURS

THE MOUNTAIN HAMLETS IN SIERRAS DE CAZORLA, SEGURA AND LAS VILLAS NATURAL PARK East Axis detour, from Cortijos Nuevos to the limit with Granada

CAMPOS DE HERÁN PÉREZ. ONE HIGH MOUNTAIN PLATEAU -OFF-ROAD- East Axis detour, from Pontones to Cazorra

TO GRANADA BY SIERRA MÁGICA Detour that crosses an exit from Sierra Mágina to Granada by Montegirol

EL CONDADO SHIRE, MEADOW AND FIERCE BULLS LANDSCAPE Transversal Axis detour from La Mancha (Ciudad Real) by Montizón and Úbeda

THE SIERRA SÁBI, THE MOUNTAIN OLIVE TREES West Axis detour from Jaén to Montefrío (Granada)

TRAVELLING BY BICYCLE AROUND ANDALUSIA THROUGH JAÉN



There is no better way of travelling and exploring Andalucía, from the seat of your bicycle, than entering by the province of Jaén.

On two wheels, the landscape seems to be moving at a perfect pace; fast enough to travel light, but not slow enough to enjoy the details of the landscape. The bicycle makes us free.

This project has been realized for bicycle travellers who look for the best route. The cyclistravel allows us to discover and meet places and people, enjoy the journey and, even, each stop. The cyclistraveler moves with his/her bicycle at the speed of butterflies, enjoying the tour, the smell and the sound that on other means of transport cannot be perceived...

DATA OF INTEREST

- GENERAL INFORMATION: Emergency, National Police, Local Police, Health Emergency, Firefighters. TOURISTIC INFORMATION: Provincial tourist information, "Castles and Battles Route". ACCOMMODATION: Apart from the hotels and campsites, it is possible to enjoy in each municipality of the province of Jaén a great extra-hotel variety of accommodation.

Granada. The road R-316 leads Jaén, Baza and Úbeda in direction to the Mediterranean. From Úbeda, the road CR-610 leads us to Andalusia. In this place, the road connects with the cross route of connection Sierra del Oro by a path that appears by the East Vereda real de los Serranos...

From Fuencaiente and Sierra Madrona Natural Park (Ciudad Real) we go into the province of Jaén by the road CR-500, which is transformed into the A-617A. The route goes through Sierra de Andújar Natural Park, one of the best representations of the Mediterranean forest of Spain...

From Fuencaiente and Sierra Madrona Natural Park (Ciudad Real) we go into the province of Jaén by the road CR-500, which is transformed into the A-617A. The route goes through Sierra de Andújar Natural Park, one of the best representations of the Mediterranean forest of Spain...

THE SIERRA MORENA MINING LANDSCAPE Connection between West Axis and Central Axis by Los Escoriales-Linares

THE SIERRA MÁGICA, ANDALUSIAN FRONTIER WITH GRANADA KINGDOM Connection between West Axis and Central Axis by Sierra Mágina

THE FORESTARY LANDSCAPE OF SIERRA DE SEGURA East Axis detour, from Gérove to Hornos de Segura

From Valdepeñas, we will go through Torrenueva to arrive to Castellar de Santiago (three localities of the province of Ciudad Real). There, we take the road CR-610 that leads us to Andalusia. In this place, the road connects with the cross route of connection Sierra del Oro by a path that appears by the East Vereda real de los Serranos...

CAMPOS DE HERÁN PÉREZ. ONE HIGH MOUNTAIN PLATEAU -OFF-ROAD- East Axis detour, from Pontones to Cazorra

TO GRANADA BY SIERRA MÁGICA Detour that crosses an exit from Sierra Mágina to Granada by Montegirol

EL CONDADO SHIRE, MEADOW AND FIERCE BULLS LANDSCAPE Transversal Axis detour from La Mancha (Ciudad Real) by Montizón and Úbeda

THE SIERRA SÁBI, THE MOUNTAIN OLIVE TREES West Axis detour from Jaén to Montefrío (Granada)

There is no better way of travelling and exploring Andalucía, from the seat of your bicycle, than entering by the province of Jaén. On two wheels, the landscape seems to be moving at a perfect pace; fast enough to travel light, but not slow enough to enjoy the details of the landscape. The bicycle makes us free.

- GENERAL INFORMATION: Emergency, National Police, Local Police, Health Emergency, Firefighters. TOURISTIC INFORMATION: Provincial tourist information, "Castles and Battles Route". ACCOMMODATION: Apart from the hotels and campsites, it is possible to enjoy in each municipality of the province of Jaén a great extra-hotel variety of accommodation.

YOU ARRIVE TO ANDALUSIA VIA JAÉN

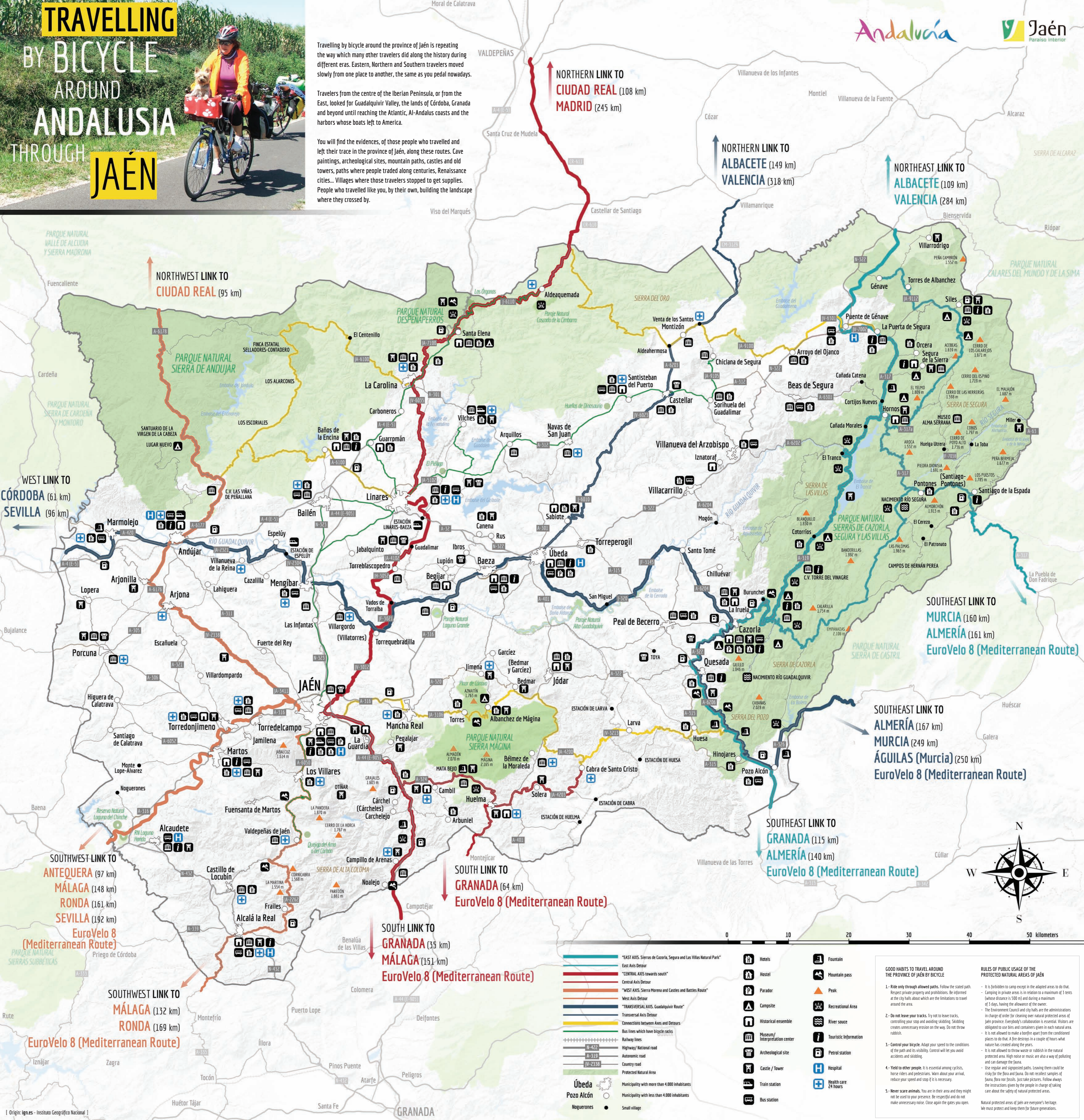
TRAVELLING BY BICYCLE AROUND ANDALUSIA THROUGH JAÉN



Travelling by bicycle around the province of Jaén is repeating the way which many other travelers did along the history during different eras. Eastern, Northern and Southern travelers moved slowly from one place to another, the same as you pedal nowadays.

Travelers from the centre of the Iberian Peninsula, or from the East, looked for Guadalquivir Valley, the lands of Córdoba, Granada and beyond until reaching the Atlantic, Al-Andalus coasts and the harbors whose boats left to America.

You will find the evidences, of those people who travelled and left their trace in the province of Jaén, along these routes. Cave paintings, archeological sites, mountain paths, castles and old towers, paths where people traded along centuries, Renaissance cities... Villages where those travelers stopped to get supplies. People who travelled like you, by their own, building the landscape where they crossed by.



NORTHWEST LINK TO CIUDAD REAL (95 km)

WEST LINK TO CÓRDOBA (61 km) SEVILLA (96 km)

SOUTHWEST LINK TO ANTEQUERA (97 km) MÁLAGA (148 km) RONDA (161 km) SEVILLA (192 km) EuroVelo 8 (Mediterranean Route)

SOUTHWEST LINK TO MÁLAGA (132 km) RONDA (169 km) EuroVelo 8 (Mediterranean Route)

NORTHERN LINK TO CIUDAD REAL (108 km) MADRID (245 km)

NORTHERN LINK TO ALBACETE (149 km) VALENCIA (318 km)

NORTHEAST LINK TO ALBACETE (109 km) VALENCIA (284 km)

SOUTHEAST LINK TO MURCIA (160 km) ALMERÍA (161 km) EuroVelo 8 (Mediterranean Route)

SOUTHEAST LINK TO ALMERÍA (167 km) MURCIA (249 km) ÁGUILAS (Murcia) (250 km) EuroVelo 8 (Mediterranean Route)

SOUTHEAST LINK TO GRANADA (115 km) ALMERÍA (140 km) EuroVelo 8 (Mediterranean Route)

SOUTH LINK TO GRANADA (64 km) EuroVelo 8 (Mediterranean Route)

SOUTH LINK TO GRANADA (35 km) MÁLAGA (151 km) EuroVelo 8 (Mediterranean Route)

- "EAST AXIS. Sierras de Cazorla, Segura and Las Villas Natural Park"
- East Axis Detour
- "CENTRAL AXIS towards south"
- Central Axis Detour
- "WEST AXIS. Sierra Morena and Castles and Battles Route"
- West Axis Detour
- "TRANSVERSAL AXIS. Guadalquivir Route"
- Transversal Axis Detour
- Connections between Axes and Detours
- Bus lines which have bicycle racks
- Railway lines
- Highway / National road
- A-319
- A-317
- IV-2338
- Country road
- Protected Natural Area
- Úbeda
- Pozo Alcón
- Noquerones
- Municipality with more than 4.000 inhabitants
- Municipality with less than 4.000 inhabitants
- Noquerones
- Small village

- Hotels
- Hostel
- Parador
- Campsite
- Historical ensemble
- Museum / Interpretation center
- Archeological site
- Castle / Tower
- Train station
- Bus station
- Fountain
- Mountain pass
- Peak
- Recreational Area
- River source
- Touristic Information
- Petrol station
- Hospital
- Health care 24 hours

- GOOD HABITS TO TRAVEL AROUND THE PROVINCE OF JAÉN BY BICYCLE**
- Ride only through allowed paths. Follow the stated path. Respect private property and prohibitions. Be informed at the city halls about which are the limitations to travel around the area.
 - Do not leave your tracks. Try not to leave tracks, controlling your stop and avoiding skidding. Skidding creates unnecessary erosion on the way. Do not throw rubbish.
 - Control your bicycle. Adapt your speed to the conditions of the path and its visibility. Control will let you avoid accidents and skidding.
 - Yield to other people. It is essential among cyclists, horse riders and pedestrians. Warn about your arrival, reduce your speed and stop if it is necessary.
 - Never scare animals. You are in their area and they might not be used to your presence. Be respectful and do not make unnecessary noise. Close again the gates you open.
- RULES OF PUBLIC USAGE OF THE PROTECTED NATURAL AREAS OF JAÉN**
- It is forbidden to camp except in the adopted areas to do that.
 - Camping in private areas is in relation to a maximum of 3 tents (whose distance is 500 m) and during a maximum of 3 days, having the allowance of the owner.
 - The Environment Council and city halls are the administrations in charge of order for cleaning over natural protected areas of Jaén province. Everybody's collaboration is essential. Visitors are obligated to use bins and containers given in each natural area.
 - It is not allowed to make a bonfire apart from the conditioned places to do that. A fire destroys in a couple of hours what nature has created along the years.
 - It is not allowed to throw waste or rubbish in the natural protected area. High noise or music are also a way of polluting and can damage the fauna.
 - Use regular and signposted paths. Leaving them could be risky for the flora and fauna. Do not recollect samples of fauna, flora nor fossils. Just take pictures. Follow always the instructions given by the people in charge of taking care about the safety of natural protected areas.
- Natural protected areas of Jaén are everyone's heritage. We must protect and keep them for future generations.